

# LAM Manor

Provision of respite and short break  
services for people with a learning  
disability (18+)



138 Whitaker Road  
Derby  
DE23 6AP

# TABLE OF CONTENTS

**What is LAM MANOR ..... 3**

**About Us ..... 4**

**Our Mission ..... 7**

**The Facilities ..... 8**

**Activities ..... 12**

**Feedback from Families ..... 14**

# WHAT IS LAM MANOR

## LAM Manor

LAM Manor is a 12 bedded newly renovated property specialising in respite and supporting living for Learning Disability and Autism. All facilities are brand new.



# ABOUT US

## Location



The Manor is located on Whitaker Road, near the town centre, a few miles from the Royal Derby hospital and Littleover village. There are many local amenities such as parks and shops nearby. There are also several bus routes which can connect to both the city centre and the hospital.

## Staff



All staff are friendly, approachable and competent, are trained to meet the requirements set out by the government and will cater to meet your individual needs. Staff will be on site 24 hours a day 7 days a week. You can expect staff to be honest, reliable and respect your privacy and dignity. Staff will work within **LAM SERVICES** professional boundaries and code of conduct.



## ABOUT US

### **What we offer**

- Residential Respite facility for people with learning disabilities and Autism
- Emergency placements subject to assessments
- Short term care and support placements with Minimum stay 2 nights; Maximum stay 6 weeks
- Friendly, approachable staff, well trained in Autism Learning Disabilities, Positive Behavioural Support, Crisis Prevention Intervention and other mandatory trainings.
- Joint working with other local partners to contribute to a reduction in the number of people with learning disabilities and autism being admitted as mental health inpatients.
- Person-centered, responsive care
- Community support
- Staffed 24 /7, 365 days a year

## ABOUT US

### Who we support

- People with a learning disability and/or autism, including young people aged 18+ some of whom also have additional needs and require an adapted environment
- People with Autism and Learning disability who have a combination of life-long conditions such as epilepsy, PEG regime, complex and enduring mental health needs, behaviors that challenge that may put themselves and others at risk of harm, physical disabilities, including sensory impairments.



**Enabling People to make the most out of everyday**

## OUR MISSION

We are governed by the principles of **Right Care, Right Support, Right Culture.**

Our goal is to allow people with Autism and Learning Disabilities to be able to fulfil their potential and support them to live within the community, within the supported living and respite environment with access to the help and care that they need at the right time and place.

Whilst promoting health and wellbeing by adopting a person-centred approach by encompassing medical, emotional and social needs whilst consistently monitoring and close management of changing conditions to meet needs. Changing care and support for the better.

# THE FACILITIES

## The Facilities

Here at LAM MANOR we have a fully equipped sensory room designed to help calm and relax those who need to use it. We have a lovely terrace area with benches to relax in the summer. There is a large lounge where several activities will take place, there is a big dining room for service users to eat a home cooked meal picked via a menu, and they have the opportunity to integrate with other service users and staff.

## Sensory Room

Designed to help calm and relax those who need to use it.



# THE FACILITIES

## Bedrooms

Large spacious bedrooms which contain ensuite bathroom facilities. Service users can bring their personal belongings and decorate with input of the service user, so it feels like their own room and their safe place and most importantly their home for the duration of their stay. Bedrooms on both floors. Bedroom upstairs contain welfare units to promote independence. Bedrooms down stairs are large and accessible.



## THE FACILITIES

**Outdoor space** which include a lovely terrace area with benches to relax in the summer. Garden and outdoor area for animals such as chickens and goats.



**Inclusive dining area** for services users to eat home cooked meals picked via a menu. The space also offers opportunity for communal interaction.





# THE FACILITIES

**Large living room** – for movies, games , quiet space



**Multifaith room**



**Fully functioning wet room**



## ACTIVITIES

At the Manor activities include:

We have lots of enjoyable activities to help keep you occupied throughout the day, these range from:

- Animal therapy (dogs, goat, and chickens)
- Planting and gardening.
- Arts and crafts
- Cooking
- Sports – football, dodgeball etcWalking
- Themed days/evenings for Christmas, Halloween, Easter, Diwali, Birthdays
- Movie Nights
- BBQs

We also organise fun days throughout the year for service users and families to enjoy.

We guarantee autistic people and people with a learning disability the choices, dignity, independence, and good access to local communities that most people take for granted.



# ACTIVITIES

We seek to support not to control on what people do.

Outdoor activities include:

- Trips to Amusement parks
- Kayaking
- Cinema
- Sporting activities such as swimming, gym, badminton
- Educational/Vocational Work
- Bowling
- Weekend visits to local amenities and other planned trips to further afield. For example, in the Derbyshire areas such as: Matlock, Ashbourne, Barton Arena, Alvaston Park, Black Rocks, Darley Park etc
- Weekend trips to the seaside at Whitby and Bridlington



## FEEDBACK FROM SERVICE USER'S FAMILIES

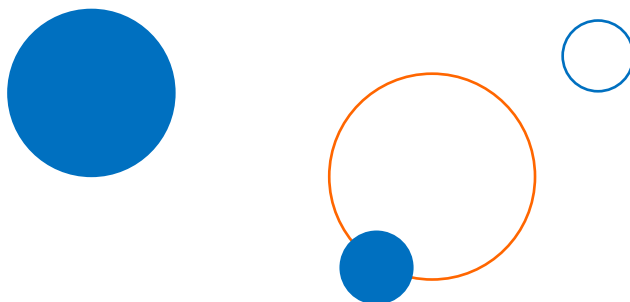
*'Gives confidence in the continuity of care around the service user'*

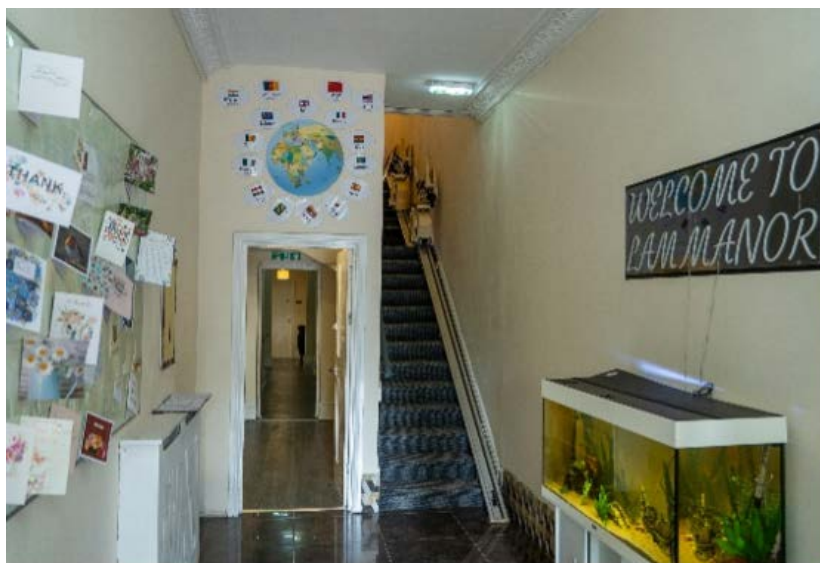
*'We are able to choose what days we book, and it is nice that our needs can be accommodated without it feeling clinical'*

*'Thank you for all the care and support provided'*

*'Very pleased overall'*

**From a healthcare professional:** *'It has been amazing to see the huge difference in X's presentation that has been influenced by therapeutic services from activities at the Manor without the need for medication'*









## Contact Us

LAM Manor

138 Whitaker Road

Derby DE23 6AP

Telephone: 07830121184 | 01332 270833

Email: [respite@lamservices.co.uk](mailto:respite@lamservices.co.uk)

Web [www.lamservices.co.uk](http://www.lamservices.co.uk)

**LAM** Services Ltd.